

MOBILETRON™

REGITAR USA™



Model No.
TX-AD001
TX-ADATEQ

MORE
SENSOR



TPMS

ATEQ Programming
Adapter



User Manual

Box Contents	2
Connecting to an ATEQ Tool	2
Inserting a TPMS Sensor	3
Programming a TPMS Sensor	4
Copy/Clone an Existing Sensor	5
Create a New TPMS Sensor	6
Copy/Clone a Set of 4 TPMS Sensors	7
Removing a TPMS Sensor	9

- ATEQ Programming Adapter
- Ethernet Cable
- User manual

Connecting to an ATEQ Tool

Insert one end of the Ethernet cable into the connection on the back of the adapter. Insert the other end of the Ethernet cable into the ATEQ tool, a Red LED will illuminate to indicate that the adapter has been connected with the tool correctly.

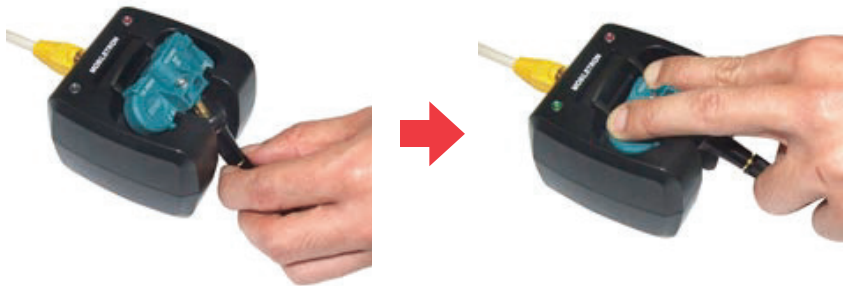


3

Inserting a TPMS Sensor

To insert a sensor into the adapter place the sensor into the adapter as shown below and press down firmly on the sensor until it is locked in place. The Green LED will illuminate if the sensor has been inserted correctly. (Please note that the LED lights will only illuminate if the adapter is connected to an ATEQ tool).

【Rubber Stem Valve】



【Metal Stem Valve】



Programming a TPMS Sensor

4

On the ATEQ Tool navigate to and select the 'Program' option followed by 'Sensor'. Then select 'Mobiletron Universal' from the list of sensor manufacturers. Follow the on screen options to select the relevant Make, Model and Year of the vehicle that the sensor is to be fitted to.



- ▶ Select 'Copy' to copy/clone an existing TPMS sensor
- ▶ Select 'Create' to create a new sensor with a new ID code
- ▶ Select 'Copy Set' to copy/clone a set of 4 wheels

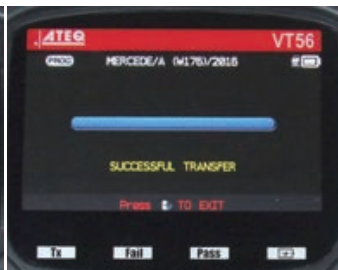
5

Copy/Clone an Existing TPMS Sensor

Select 'Copy' to copy/clone an existing TPMS sensor. When directed scan the existing TPMS sensor with the ATEQ tool.

The ATEQ tool will then ask you ensure that you have the correct Mobiletron sensor inserted into the adapter, press 'OK' to begin programming.

Once programming is complete the message "Successful Transfer" will be displayed.



Create a New TPMS Sensor

6

Select 'Create' to create a new TPMS sensor with a new ID code. The ATEQ tool will then ask you ensure that you have the correct Mobiletron sensor inserted into the adapter, press 'OK' to begin programming.

Once programming is complete the message "Successful Transfer" will be displayed.



7

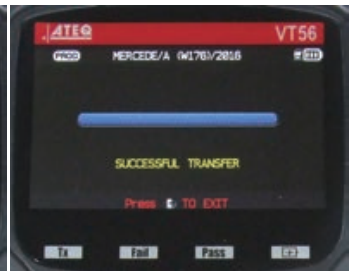
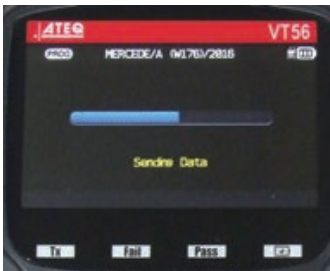
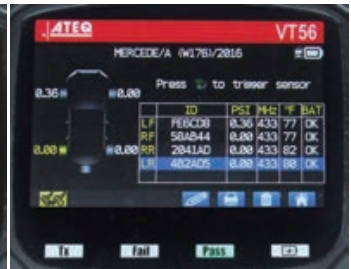
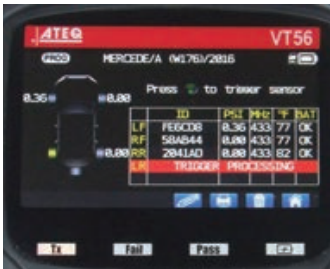
Copy/Clone a Set of 4 TPMS Sensors

Select 'Copy' to copy/clone an existing TPMS sensor. When directed scan the existing TPMS sensor with the ATEQ tool.

The ATEQ tool will then ask you ensure that you have the correct Mobiletron sensor inserted into the adapter, press 'OK' to begin programming.

Once programming is complete the message "Successful Transfer" will be displayed.

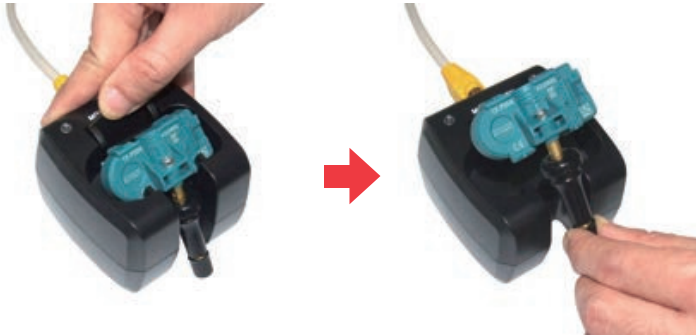




Removing a TPMS Sensor

To remove the sensor from the adapter press the release clip and pull the sensor from the cradle.

【Rubber Stem Valve】



【Metal Stem Valve】



PARAMETERS	SPECIFICATION
Support TPMS Diagnostic Tool	ATEQ VT55 / VT56
Power Supply	DC 5V \pm 0.3V
Current Consumption	Max. 15mA
Operating Temperature	-20 ~ +60°C (-4 ~ +140°F)
Storage Temperature	-20 ~ +60°C (-4 ~ +140°F)
Operating Humidity	0 ~ 95%
Dimensions	84.8(L) X 83.8(W) X 66.2(H) mm
Weight	125 g



ATEQ Programming Adapter

■ TAIWAN

Mobiletron Electronics Co., Ltd.
No. 85, Sec.4, Chung-Ching Rd.
Ta-Ya District, Taichung City, 428,
Taiwan
Tel: +886-4-25607389
E-mail: mobiletron@more.com.tw

■ U.S.A.

Regitar U.S.A. Inc.
2575 Container Drive,
Montgomery AL 36109 U.S.A.
Tel: +1-334-244-1885
E-mail: info@regitar.com

■ EUROPE

Mobiletron UK Ltd.
Unit 80 Roman Way, Roman Way Ind Est.,
Longridge Road Preston, Lancashire, PR2 5BE
United Kingdom
Tel: +44-177-2693780
E-mail: info@mobiletron.co.uk

■ U.S.A.

Durofix Inc.
9168 Pittsburgh Ave.
Rancho Cucamonga, CA 91730
Tel: +1-909-980-3323
E-mail: info@durofix.com

MOBILETRON™

REGITAR USA™